

Kategorie:Histologie

Subcategories

This category has the following 6 subcategories, out of 6 total.

G

- Galerie preparátů (1 P, 4 F)

H

- Histologická schémata (6 P, 69 F)
- Histologické praktikum (1. LF UK) (2 P)
- Histologické praktikum (1.LF UK) (7 P, 2 F)
- Histologické preparáty (213 P, 1,416 F)

S

- Slovník histologie a embryologie (131 P)

Pages in category "Histologie"

The following 200 pages are in this category, out of 713 total.

(previous page) (next page)

A

- Agranulocyty
- Akrozomová reakce
- Aktin
- Alveolo-kapilární membrána
- Amnion
- Antrální folikul
- Aorta (preparát)
- Aorta - RF
- Apokrinní žlázy
- Appendix (obrázek)
- Appendix (SFLT)
- Appendix - HE
- Appendix, detail (obrázek)
- *APUD systém*
- Aromatická žláza (obrázek)
- Arteria - zelený trichrom / green trichrom
- Arterie elastická (SFLT)
- Arterie svalová (SFLT)
- Arterie svalová / Muscle artery - HE
- Artérie (histologický preparát, Zelený trichrom)
- Astroblast
- Portál:Atlas histologických preparátů
- Portál:Atlas histologických preparátů/Endokrinní systém
- Portál:Atlas histologických preparátů/GIT
- Portál:Atlas histologických preparátů/Kožní systém
- Portál:Atlas histologických preparátů/Močový systém
- Portál:Atlas histologických preparátů/Mužský pohlavní systém
- Portál:Atlas histologických preparátů/Respirační systém
- Portál:Atlas histologických preparátů/Ženský pohlavní systém
- Autolýza
- Autonomní ganglion (preparát)
- Autonomní ganglion (SFLT)
- Autonomní ganglion / Autonomic ganglion - HE
- Axilla - HE
- Axilla/histologický preparát
- Axon
- AZAN

B

- B-lymfocyty
- Bakteriální endokarditis (preparát)
- Barvení hematoxylin-eosin
- Barvení na myelin
- Barvení podle Giemsy
- Barvení ve světelné mikroskopii
- Barvicí metody (1. LF UK)
- Bazofilní erythroblast
- Bazální buňky
- Bazální lamina
- Billrothovy provazce
- Biologická membrána
- Biologická membrána a transport látek přes biologickou membránu
- Biomechanika
- Biomechanika svalového stahu
- Biopsie
- Bronchioly (histologie)
- Bronchus (preparát)
- Bronchus segmentalis (histologický preparát)
- Bronchus segmentalis (SFLT)
- Bronchus segmentalis - HE
- Bronchus - HE
- Bronchy (histologie)
- Brzlík
- Brzlík / Thymus - HE
- Bulbus oculi (SFLT)
- Bulbus oculi - HE
- Buněčná membrána
- Buněčná spojení
- Buněčné inkluze
- Buněčné jádro
- Buňka
- Bílý tuk (preparát)

C

- Capsula fibrosa
- Cementum
- Cerebellum (SFLT)
- Chlupy a vlasy
- Chondrocyt
- Chondrogenní a desmogenní osifikace (praktikum) (1. LF UK)
- Chorion
- Chorion frondosum (SFLT)
- Chorion frondosum - HE
- Chrupavka
- Chuťové receptory
- Chámovod
- Clarovy buňky
- Colon (obrázek)
- Colon (SFLT)
- Corpus luteum
- Corpus luteum - HE
- Cortex renalis
- Cortiho orgán
- Cyklické změny v ženském těle
- Cytoarchitektonika mozkové kůry
- Cytocentrum
- Cytokeratin
- Cytologická barvení
- Cytoskelet
- Cévy

D

- Decidua (heslo)
- Degradační systém buňky
- Dendritické buňky
- Dentinové tubuly
- Dentinum
- Difusní endokrinní systém
- *Difúzní neuroendokrinní systém*
- Dorsum linguae (obrázek)
- Ductus deferens (obrázek)
- Ductus deferens (SFLT)

- Ductus deferens - HE
- Ductus omphaloentericus
- Duodenum (obrázek)
- Duodenum (SFLT)
- Duodenum - HE
- Dusičnan stříbrný
- Dutina nosní (histologie)
- Portál:Dýchací systém
- Procvičování:Dýchací systém
- Dýchací systém (histologie)
- Dýchací řetězec a tvorba ATP (FBLT)
- Děloha
- Děloha (preparát)
- Děloha / Uterus - HE

E

- Ekrinní potní žlázy
- Elastická arterie / Elastic artery (aorta) - HE
- Elastická arterie / Elastic artery (aorta) - WRF
- Elastická artérie (histologický preparát)
- Elastická chrupavka (obrázek)
- Elastin
- Portál:Embryologické preparáty
- Enamelum
- Endocytóza
- Endokard
- Endokrinní orgány
- Endoplazmatické retikulum
- Endost
- Energetický systém buňky
- Enterocyt
- Eozinofilní granulocyt
- Epididymis - HE
- Epifýza
- Epiglottis (histologický preparát)
- Epiglottis (preparát)
- Epiglottis (SFLT)
- Epiglottis - HE
- Epiglottis - RF
- Epikard
- Epitel
- Epitelie (patobiochemie)
- Erytropoeza

F

- Fetální plíce (histologický preparát)
- Fetální plíce (SFLT)
- Fetální plíce / Fetal lung
- Fundus (histologický preparát)
- Funiculus spermaticus (obrázek)
- Funiculus spermaticus (SFLT)
- Funiculus spermaticus - HE
- Fyziologické hodnoty krevních elementů

G

- Gametogeneze
- Gaster - cardia (SFLT)
- Gaster - fundus (SFLT)
- GER (rozcestník)
- Gl. sublingualis (SFLT)
- Gl. submandibularis (SFLT)
- Glandula parathyroidea (histologický preparát)
- Glandula parathyroidea (SFLT)
- Glandula parathyroidea - HE
- Glandula parotis
- Glandula parotis (obrázek)
- Glandula parotis (SFLT)
- Glandula parotis - HE
- Glandula parotis, detail (obrázek)
- Glandula sublingualis
- Glandula sublingualis (obrázek)
- Glandula sublingualis - HE

- Glandula sublingualis - HE
- Glandula sublingualis, detail (obrázek)
- Glandula submandibularis
- Glandula submandibularis (obrázek)
- Glandula submandibularis - HE
- Glandula submandibularis, detail (obrázek)
- Glandula suprarenalis (SFLT)
- Glandula suprarenalis - AZAN
- Glandula suprarenalis - HE
- Glandula thyroidea (SFLT)
- Glandulae vesiculosae
- Golgiho aparát
- Golgiho šlachové tělísko
- Graafův folikul
- Granulocyty
- *Granulární pneumocyt*

H

- Uživatelka: Haninna/Pískoviště
- Hematoencefalická bariéra
- Hematopoeza (rozcestník)
- Hemopoeza (praktikum) (1. LF UK)
- Heparansulfát
- Histiocyt
- Histochemie
- Procvičování: Histologické barvení
- Portál: Histologické praktikum (1. LF UK)
- Portál: Histologický atlas (3. LF UK)
- Histologický atlas 3. LF UK – modul A
- Histologický atlas 3. LF UK – modul B
- Histologický průkaz mikroorganismů

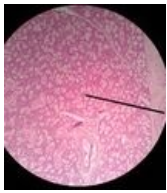
(previous page) (next page)

Media in category "Histologie"

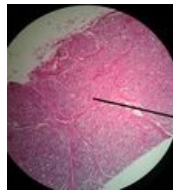
The following 200 files are in this category, out of 548 total.

(previous page) (next page)

				
01 Svalova arteri... 1,920 × 2,068; 933 KB	02 Ledvina.jpg 1,920 × 2,137; 1.09 MB	03 Stitna zláza.jpg 1,920 × 1,920; 1.28 MB	04 Tluste strevo.j... 1,920 × 2,127; 1.03 MB	05 a Vejcovod 10... 1,920 × 2,073; 1.17 MB
				
05 b Vejcovod 40... 1,920 × 1,950; 1.24 MB	06 Bronchus.jpg 1,920 × 2,112; 1.14 MB	07 Mocovy mech... 1,920 × 2,004; 852 KB	08 Kuze bricha.jpg 1,812 × 1,876; 973 KB	09 Jicen.jpg 1,920 × 2,058; 1.19 MB
				
10 Vagina.jpg 1,920 × 2,186; 1.07 MB	11 Plíce.jpg 1,876 × 2,210; 1 MB	12 Tenke strevo.j... 1,920 × 2,279; 1.26 MB	13 Pankreas.jpg 1,915 × 2,206; 1.3 MB	14 Parotis.jpg 1,920 × 2,201; 1.49 MB



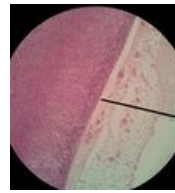
15 Submandibula...
1,910 × 2,191;
1.41 MB



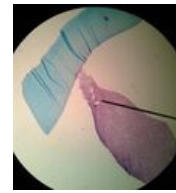
16 Mamma lacta...
1,910 × 2,107;
1.49 MB



17 Mamma nonla...
1,920 × 2,087; 849
KB



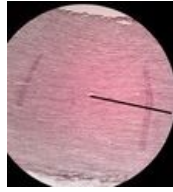
18 Nadledvina.jpg
1,920 × 2,092;
1.37 MB



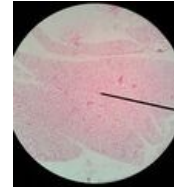
19 Mesenchym 4...
1,920 × 2,087; 952
KB



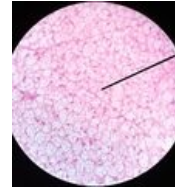
20 Pupecnik 40x ...
1,920 × 2,171;
1.05 MB



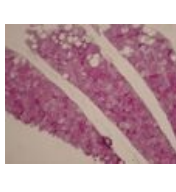
21 Aorta.jpg
1,920 × 2,117;
1.61 MB



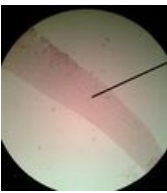
22 a Hnedý tuk 1...
1,920 × 2,196;
1.33 MB



22 b Hnedý tuk 4...
1,920 × 2,137;
1.16 MB



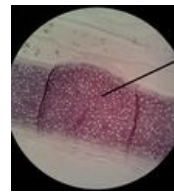
22 c Hnědý tuk .jpg
1,037 × 778; 233
KB



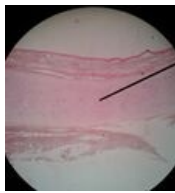
24 Kloubni chrup...
1,920 × 2,132; 772
KB



25 a Epiglottis RF...
1,920 × 2,206; 974
KB



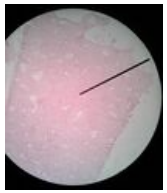
25 b Epiglottis RF...
1,920 × 2,176;
1.01 MB



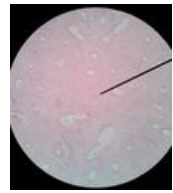
26 Epiglottis HE.jpg
1,920 × 1,984; 819
KB



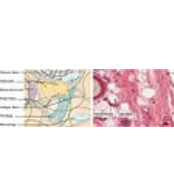
27 Desmogenni ...
1,920 × 2,220; 912
KB



29 a lamelosni k...
1,895 × 2,225; 922
KB



29 b lamelosni k...
1,920 × 2,191; 973
KB



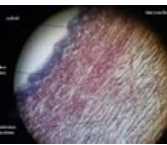
408 Connective T...
1,212 × 375; 358
KB



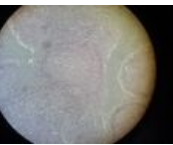
Alveolo-kapilární ...
1,286 × 1,238; 439
KB



Anus1.jpg
640 × 480; 88 KB



Aorta podelne - e...
640 × 480; 54 KB



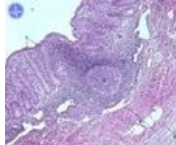
Aorta pricne 2.jpg
640 × 480; 114 KB



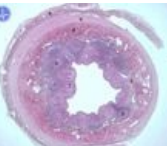
Aorta RF 3.jpg
1,037 × 778; 171
KB



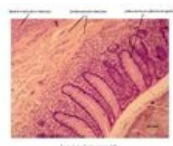
Aorta RF 4.jpg
1,037 × 778; 226
KB



Apendix 2.jpg
600 × 480; 96 KB



Apendix.jpg
600 × 480; 42 KB



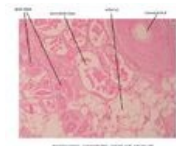
Appendix - detail...
3,046 × 2,454;
1.11 MB



Appendix2.jpg
1,595 × 1,275; 303
KB



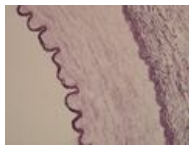
Appendix3 -a.jpg
640 × 480; 51 KB



Aromatická žláza...
3,046 × 2,454; 807
KB



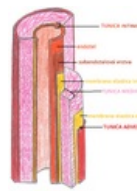
Arterie svalová H...
1,037 × 778; 196
KB



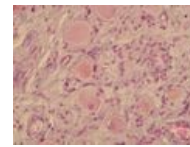
Arterie svalová R...
1,037 × 778; 167
KB



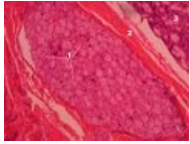
Arterie vena.png
798 × 606; 26 KB



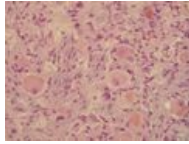
Arterie vena2.png
1,248 × 1,532;
1.99 MB



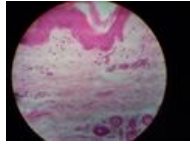
Autonomní gangl...
1,037 × 778; 191
KB



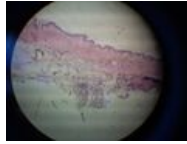
Autonomní gangl...
2,592 × 1,944;
1.88 MB



Autonomní gangl...
1,037 × 778; 204
KB



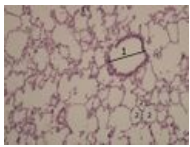
Axilla 5.jpg
640 × 480; 79 KB



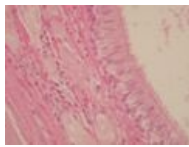
Axilla 6.jpg
640 × 480; 71 KB



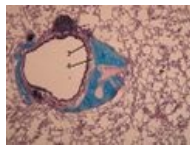
Bloudivé buňky.jpg
1,187 × 474; 124
KB



Bronchiolus.jpg
1,037 × 778; 214
KB



Bronchus 3lf.jpg
1,037 × 778; 141
KB



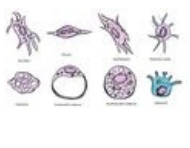
Bronchus 6.jpg
1,037 × 778; 329
KB



Bronchus2.jpg
1,037 × 778; 193
KB



Bronchus4.jpg
1,037 × 778; 235
KB



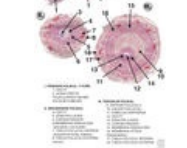
Buňky fixní.jpg
1,673 × 930; 309
KB



Bílá tuková tkáň ...
1,037 × 778; 106
KB



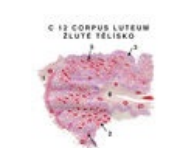
Bílá tuková tkáň ...
1,037 × 778; 82
KB



C11 detail.jpg
1,600 × 2,264;
1.42 MB



C11 Ovarium.jpg
1,600 × 2,264;
1.59 MB



C12 Corpus luteu...
1,600 × 2,264;
1.51 MB



C13 Tuba uterina...
1,600 × 2,264;
1.51 MB



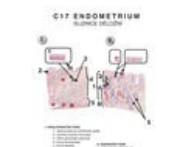
C14 Corpus uteri...
595 × 842; 329 KB



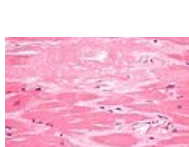
C15 Cervix uteri.j...
1,600 × 2,264;
1.42 MB



C16 Vagina.jpg
1,600 × 2,264;
1.16 MB



C17 Endometriu...
1,600 × 2,264; 785
KB



Cardiac amyloido...
4,272 × 2,848;
3.16 MB



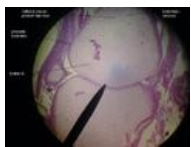
Cervix uteri2.jpg
640 × 480; 102 KB



Cervix uteri8.jpg
640 × 480; 103 KB



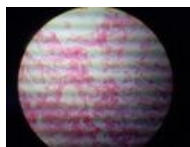
Cervix uteri9.jpg
640 × 480; 141 KB



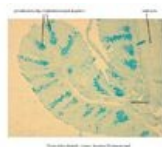
Chondrogenní osi...
815 × 611; 69 KB



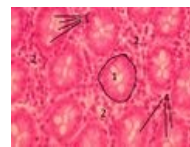
Chorion3.jpg
640 × 480; 92 KB



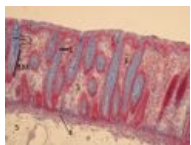
Chorion5.jpg
640 × 480; 85 KB



Colon - alciánová...
3,046 × 2,454; 899 KB



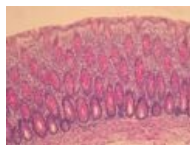
Colon 3lf.jpg
1,037 × 778; 238 KB



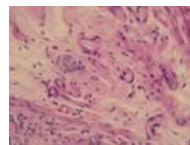
Colon AZAN 3lf.jpg
1,037 × 778; 303 KB



Colon PAS 3lf.jpg
1,037 × 778; 263 KB



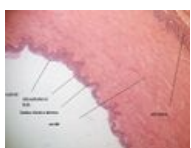
Colon PAS2.jpg
1,037 × 778; 252 KB



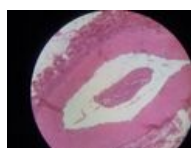
Colon submucos...
1,037 × 778; 179 KB



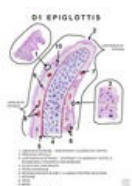
Corpus luteum3.j...
640 × 480; 91 KB



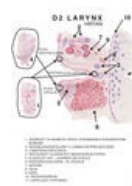
Cévní svazek - el...
640 × 480; 39 KB



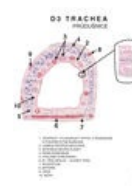
Cévní svazek2.jpg
640 × 480; 90 KB



D1 Epiglottis.jpg
1,600 × 2,264;
1.29 MB



D2 Larynx.jpg
1,600 × 2,264;
1.32 MB



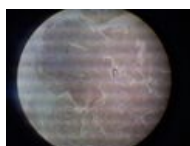
D3 Trachea.jpg
1,600 × 2,264; 915 KB



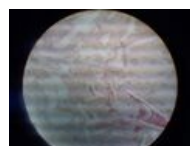
D4 Pulmo.jpg
1,600 × 2,264; 603 KB



Decidua10.jpg
640 × 480; 70 KB



Decidua6.jpg
640 × 480; 72 KB



Decidua9.jpg
640 × 480; 78 KB



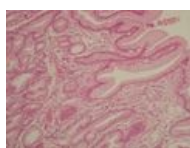
Deloha doplneni ...
1,296 × 972; 549 KB



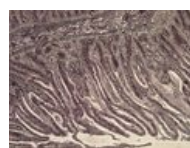
Desmogenní osifi...
1,632 × 1,224; 382 KB



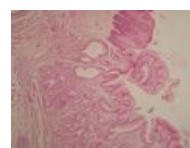
Duodenum - a.jpg
640 × 480; 37 KB



Duodenum 4.jpg
1,296 × 972; 192 KB



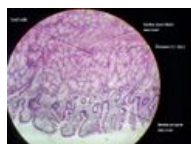
Duodenum Ag 3.j...
2,592 × 1,944;
2.54 MB



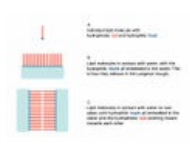
Duodenum1.jpg
1,296 × 972; 183 KB



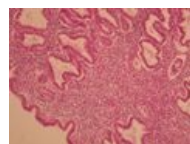
Duodenum3 -a.jpg
640 × 480; 47 KB



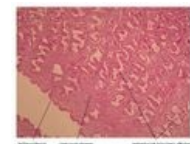
Duodenum4 -a.jpg
640 × 480; 60 KB



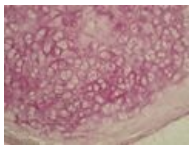
Dvojvrstva.jpg
569 × 398; 45 KB



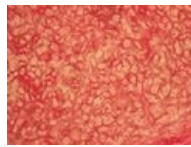
Děloha 2.jpg
1,037 × 778; 280 KB



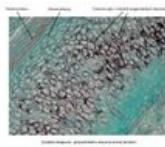
Děloha 3lf.jpg
1,100 × 900; 331 KB



Elastická chrupa...
1,037 × 778; 207 KB



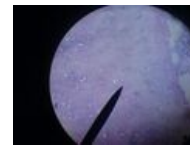
Elastická chrupa...
1,037 × 778; 231 KB



Elastická chrupa...
3,046 × 2,454; 1.02 MB



Elastická chrupa...
651 × 490; 52 KB



Elastická chrupa...
1,632 × 1,224; 384 KB



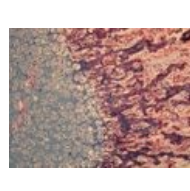
Enamelmineraliz...
904 × 936; 392 KB



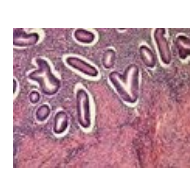
Enchondrální osif...
1,037 × 778; 260 KB



Enchondrální osif...
1,037 × 778; 291 KB



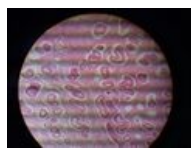
Enchondrální osif...
1,037 × 778; 333 KB



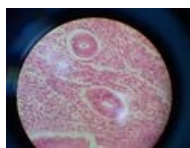
Endometrium a ...
2,592 × 1,944; 1.63 MB



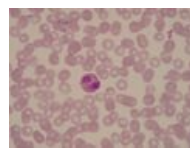
Endometrium a ...
2,592 × 1,944; 1.51 MB



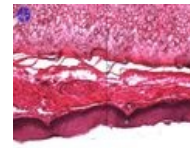
Endometrium2.jpg
640 × 480; 115 KB



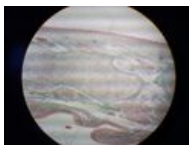
Endometrium3.jpg
640 × 480; 121 KB



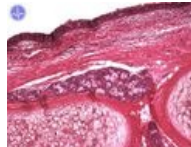
Eo 2.jpg
1,037 × 778; 117 KB



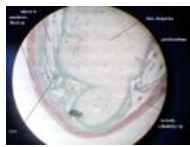
Epiglottis 22.jpg
600 × 480; 67 KB



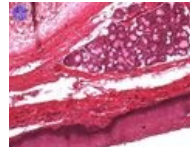
Epiglottis1 - rozdi...
640 × 480; 88 KB



Epiglottis11.jpg
600 × 480; 72 KB



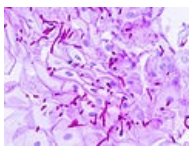
Epiglottis4 -a.jpg
640 × 480; 37 KB



Epiglottis7.jpg
600 × 480; 74 KB



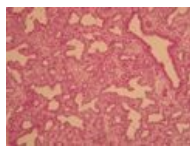
Epitel dýchacích ...
2,116 × 1,413; 1.23 MB



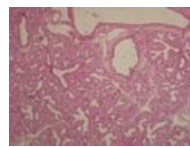
Esophageal cand...
4,080 × 3,072; 1.14 MB



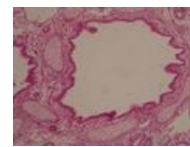
F1 cor.jpg
1,175 × 1,275; 275 KB



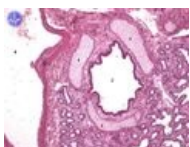
Fetální plíce 1.jpg
1,296 × 972; 242 KB



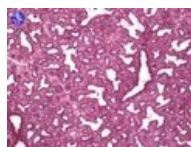
Fetální plíce 2.jpg
1,296 × 972; 194 KB



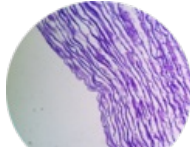
Fetální plíce bron...
2,592 × 1,944; 1.63 MB



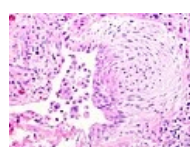
Fetální plíce.jpg
600 × 480; 63 KB



Fetální plíce1 2.jpg
600 × 480; 80 KB



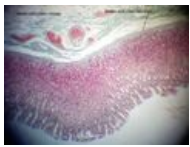
Fibras elasticas.p...
3,234 × 2,895; 8.88 MB



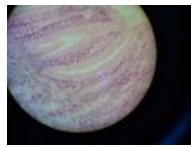
Fibroblast focus.jpg
2,040 × 1,536; 2.08 MB



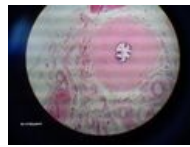
Fotografie0023.jpg
640 × 480; 44 KB



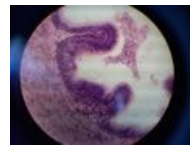
Fundus žaludku -...
640 × 480; 56 KB



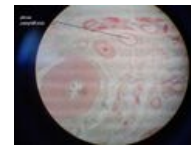
Fundus žaludku4...
640 × 480; 94 KB



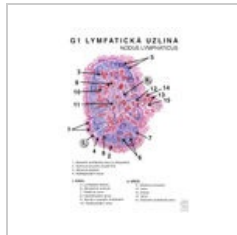
Funiculus sperm...
640 × 480; 35 KB



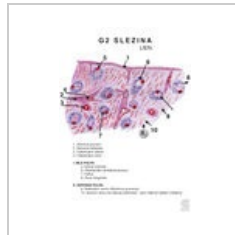
Funiculus sperm...
640 × 480; 76 KB



Funiculus sperm...
640 × 480; 31 KB



G1.jpg
1,600 × 2,264; 533 KB



G2.jpg
1,600 × 2,264; 565 KB



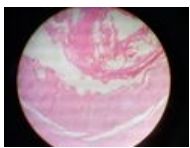
G3.jpg
1,600 × 2,264; 412 KB



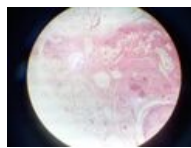
G4.jpg
1,600 × 2,264; 1.44 MB



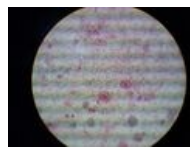
G5-Brzlík-dospělé...
1,600 × 2,264; 315 KB



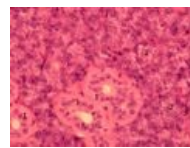
Ggl.cerebrospina...
640 × 480; 89 KB



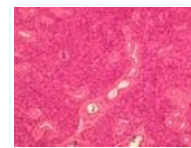
Ggl.vegetativni 3...
640 × 480; 84 KB



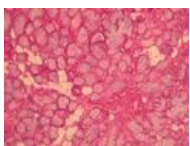
Ggl.vegetativni 4...
640 × 480; 81 KB



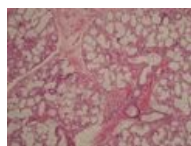
Gl parotis 4.jpg
1,037 × 778; 241 KB



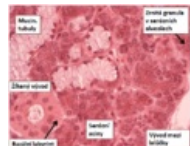
Gl parotis9.jpg
1,037 × 778; 349 KB



Gl sublingualis Z...
1,296 × 972; 233 KB



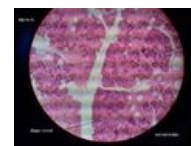
Gl submandibula...
1,037 × 778; 276 KB



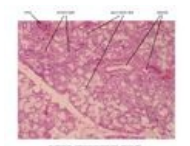
Glandula parotis ...
472 × 379; 431 KB



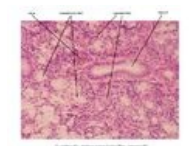
Glandula parotis...
640 × 480; 128 KB



Glandula parotis...
640 × 480; 48 KB



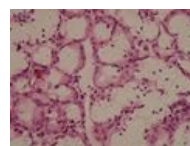
Glandula subling...
3,046 × 2,454; 974 KB



Glandula subling...
3,046 × 2,454; 861 KB



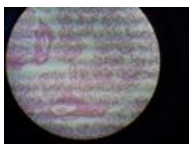
Glandula subling...
451 × 340; 390 KB



Glandula subling...
1,296 × 972; 174 KB



Glandula subling...
640 × 480; 115 KB



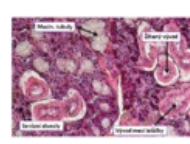
Glandula subling...
640 × 480; 101 KB



Glandula subling...
640 × 480; 29 KB



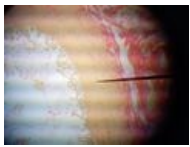
Glandula subling...
640 × 480; 113 KB



Glandula subman...
513 × 344; 500 KB



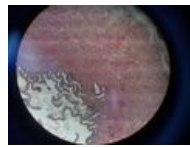
Glandula subman...
640 × 480; 114 KB



Glandula vesicul...
640 × 480; 91 KB



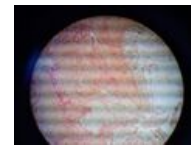
Glandula vesicul...
640 × 480; 114 KB



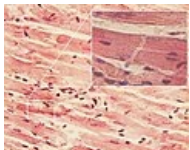
Glandula vesicul...
640 × 480; 101 KB



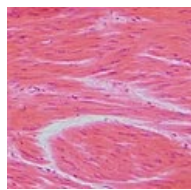
Glandula vesicul...
640 × 480; 81 KB



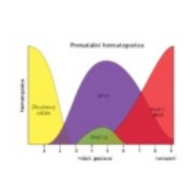
Glandula vesicul...
640 × 480; 96 KB



Glanzstreifen.jpg
1,280 × 1,024; 456 KB



Glatte Muskelzell...
619 × 611; 136 KB



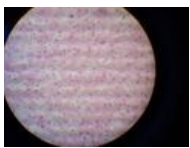
Hematopoesa.svg
512 × 362; 4 KB



Hepar PAS 6 -a.jpg
640 × 480; 41 KB



Hepar1 -a.jpg
640 × 480; 24 KB



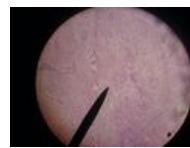
Hepar3.jpg
640 × 480; 81 KB



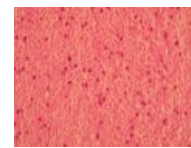
Historický stereo...
417 × 326; 121 KB



Hladká svalovina...
3,046 × 2,454; 693 KB



Hladké svalstvo2...
1,632 × 1,224; 440 KB



Hladký sval 3.jpg
1,037 × 778; 213 KB



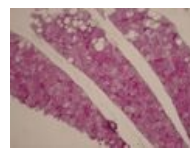
Hladký sval 4.jpg
1,037 × 778; 120 KB



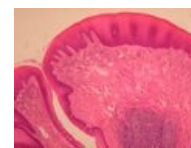
Hladký sval.jpg
1,037 × 778; 149 KB



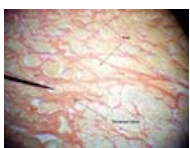
Hladký sval2.jpg
1,037 × 778; 133 KB



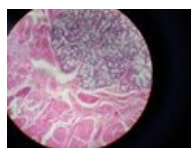
Hnědý tuk 6.jpg
1,037 × 778; 233 KB



Hrazená papila 4...
1,296 × 972; 171 KB



Hrot jazyka - Wei...
640 × 479; 59 KB



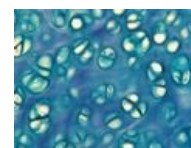
Hrot jazyka4 - jaz...
640 × 480; 122 KB



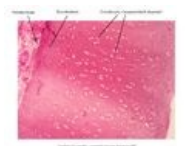
Hyalinní chrupav...
650 × 488; 50 KB



Hyalinní chrupav...
1,037 × 778; 115 KB



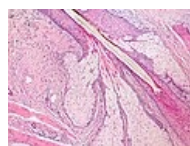
Hyalinní chrupav...
1,037 × 778; 167 KB



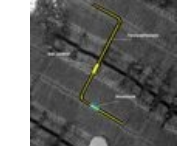
Hyalinní chrupav...
3,046 × 2,454; 728 KB



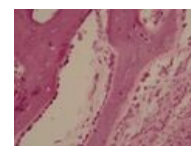
Hypofyza1 - HE.jpg
640 × 480; 61 KB



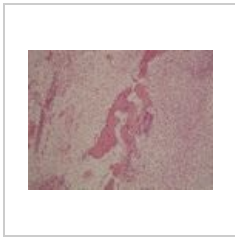
Insertion of seba...
2,048 × 1,536;
1.04 MB



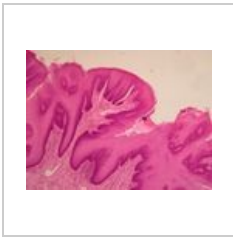
Interkalar disk.jpg
645 × 813; 190 KB



Intramembranos...
1,037 × 778; 158 KB



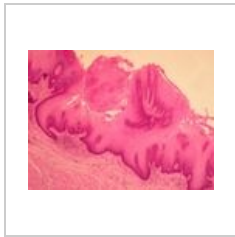
Intramembranos...
1,037 × 778; 283
KB



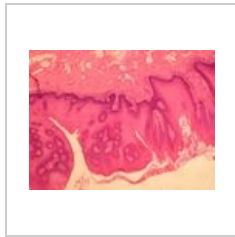
Jazyk houbovitá ...
1,296 × 972; 152
KB



Jazyk nitkovitá p...
1,296 × 972; 187
KB



Jazyk nitkovitá p...
1,296 × 972; 193
KB



Jazyk papily 2.jpg
1,296 × 972; 199
KB

(previous page) (next page)